



PECONPOWER™

AGM VRLA

NON-SPILLABLE, SEALED LEAD ACID BATTERY



PECONPOWER AGM VRLA Series

Description

PECONPOWER AGM VRLA batteries are high quality, maintenance-free batteries produced at a state-of-the-art manufacturing facility with advanced battery manufacturing technologies and high purity materials. It has a long float and cyclic life span, high specific energy, and low self-discharge rate. Completely leak-proof, it has excellent anti-corrosion properties and performs flawlessly in varying temperature conditions.

PECONPOWER AGM VRLA batteries have a design life ranging from 5 to 10 years and is backed by standard warranties depending on the model

Features

- Design life of 5 to 10 years at 27°C, depending on the model
- Superior Lead Calcium alloy grid with high density active materials
- Excellent cyclic performance and recovery after over-discharging
- High purity material ensuring low self-discharge
- Valve regulated (sealed) construction for safe operation in any position
- Tank formed plates optimise cell voltage balance and performance
- Completely leak-proof and maintenance-free
- Compact design with high power to power ratio
- High impact ABS casing

Applications



UPS backup



Emergency lighting



Tele-communications power supply



DC power supply



Electronic weighing machines



Railway signalling systems



Network communication equipments



Medical equipments

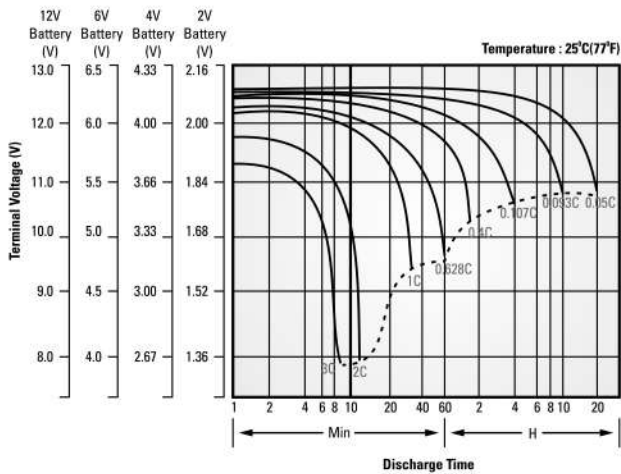


Power station systems

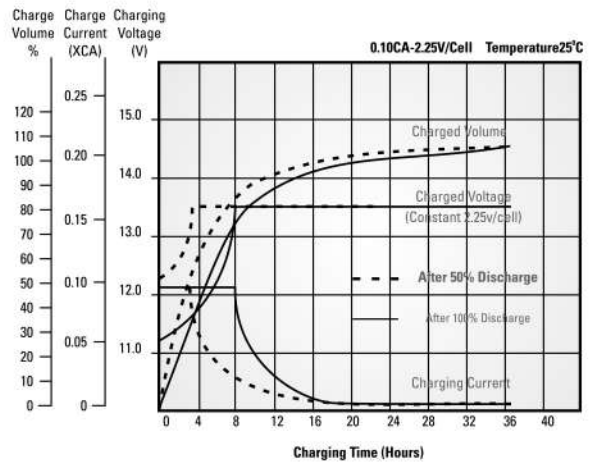
Available Range : 12V 5AH to 12V 240AH

Electrical Performance

Discharge Characteristics

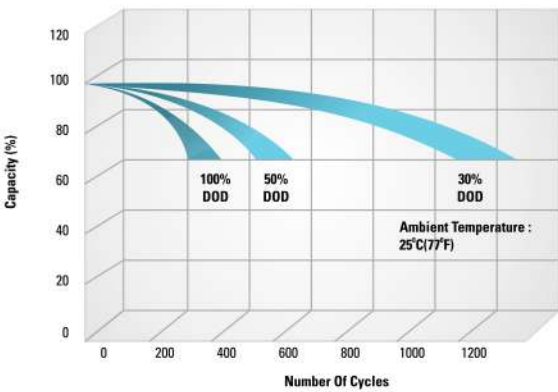


Float Charging Characteristics

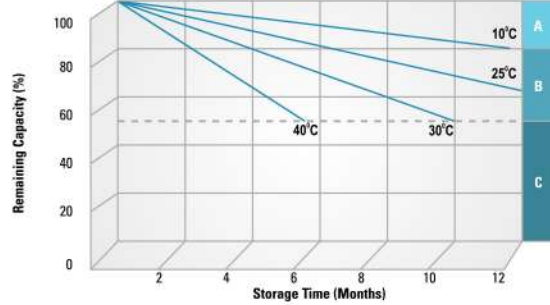


Cycle Life in Relation to Depth of Discharge

Testing Condition
 Temperature: 25°C.
 Discharging: $3.4 \times I_n$ for 3 hours.
 Charging: $6 \times I_n$ for 16 hours at 14.1V.



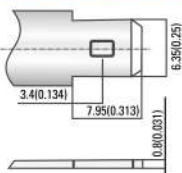
Self Discharge Characteristics



- A** No Supplementary Charge required
(Carry out supplementary charge before use if 100% capacity is required)
- B** Supplementary Charge required before use. Optional charging way as below:
 1. Charge for 16-20 hours at $0.065C_{20}$ at constant voltage 2.3 V/Cell
 2. Charge for 30-36 hours at $0.05C_{20}$ at constant voltage 2.35 V/Cell
- C** Supplementary Charge may often fail to recover the capacity
The battery should never be left standing till this is reached

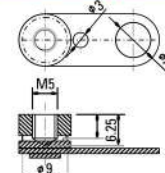
Battery Terminal Options

Terminal Type : F2



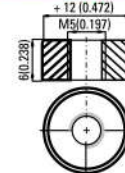
Faston Type (Brass) Quick Disconnect Tabs; Silver Coating For Better Conductivity.

Terminal Type : T4



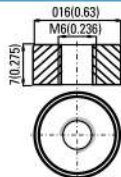
Brass Coated With Tin. Threaded Insert Torque: 3.0 N*m

Terminal Type : T5



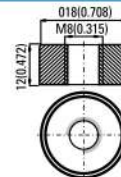
Brass Coated With Tin. Threaded Insert 5mm Stud. Torque: 3.0 N*m

Terminal Type : T6



Brass Coated With Tin. Threaded Insert 6mm Stud. Torque: 5.2 N*m

Terminal Type : T8



Brass Coated With Tin. Threaded Insert 8mm Stud. Torque: 12.5 N*m

General Technical Particulars of PP Series VRLA AGM Battery Models

Model	Capacity (AH) at 27°C					HRD 0.5 hr Amperes 9.6V	Dimensions (mm) ± 3mm				Normal Charging Current (A)	Short Circuit Current (A)	Internal Resistance (mΩ)	Shipping Weight (Kg) ± 3%	Terminal Type
	20 hr 10.5V	10 hr 10.5V	5 hr 10.5V	3 hr 10.5V	1 hr 10.2V		Length	Width	Height	Total Height					
PPI2-5	5.00	4.65	4.25	3.75	3.00	5.00	92	72	102	110	0.50	130	52.00	1.52	F2
PPI2-7	7.00	6.50	5.90	5.30	4.20	6.50	152	65	95	100	0.65	170	30.00	2.00	F2
PPI2-7.5	7.50	6.97	6.38	5.63	4.50	7.00	152	65	95	100	0.70	198	30.00	2.15	F2
PPI2-8	8.00	7.44	6.80	6.00	4.80	8.00	152	65	95	100	0.75	212	30.00	2.32	F2
PPI2-9	9.00	8.37	7.65	6.75	5.40	9.00	152	65	95	100	0.90	242	19.00	2.42	F2
PPI2-10	10.00	9.30	8.50	7.50	6.00	10.00	151	98	95	100	1.00	290	19.00	3.08	F2
PPI2-12	12.00	11.20	10.20	9.00	7.20	12.00	151	98	95	100	1.20	339	17.00	3.58	F2
PPI2-18	18.00	16.70	15.30	13.50	10.80	18.00	181	78	171	171	1.80	360	15.00	6.04	T4
PPI2-20	20.00	18.60	17.00	15.00	12.00	20.00	181	78	171	171	2.00	397	14.00	6.54	T4
PPI2-22	22.00	20.50	18.70	16.50	13.20	22.00	181	78	171	171	2.20	492	14.00	7.21	T4
PPI2-26	26.00	24.20	22.10	19.50	15.60	26.00	177	167	126	126	2.60	760	14.00	8.56	T5
PPI2-28	28.00	26.00	23.80	21.00	16.80	28.00	177	167	126	126	2.80	789	14.00	8.88	T5
PPI2-42	42.00	39.06	35.70	31.50	25.20	42.00	199	167	179	179	4.20	1092	13.00	13.77	T6
PPI2-45	45.00	41.90	38.30	33.90	27.00	45.00	199	167	179	179	4.50	1152	13.00	14.70	T6
PPI2-65	65.00	60.50	55.30	48.80	39.00	65.00	347	167	190	190	6.50	1351	11.00	19.82	T6
PPI2-70	70.00	65.15	59.55	52.55	42.00	70.00	347	167	190	190	7.00	1531	11.00	21.65	T6
PPI2-75	75.00	69.70	63.75	56.40	45.00	75.00	347	167	190	190	7.50	1595	11.00	23.28	T6
PPI2-85	85.00	79.00	72.25	63.90	51.00	85.00	330	173	220	225	8.50	1799	8.00	25.65	T6
PPI2-90	90.00	83.60	76.50	67.70	54.00	90.00	330	173	220	225	9.00	1832	6.70	28.58	T6
PPI2-100	100.00	93.00	85.00	75.00	60.00	100.00	330	173	220	225	10.00	1948	5.30	29.00	T6
PPI2-120	120.00	111.60	102.00	90.00	72.00	120.00	405	173	236	236	12.00	2522	4.00	37.82	T8
PPI2-135	135.00	122.00	114.00	101.00	81.00	135.00	486	170	239	239	13.50	2622	4.00	39.80	T8
PPI2-150	150.00	139.50	127.50	112.50	90.00	150.00	486	170	239	239	15.00	2743	3.50	42.68	T8
PPI2-165	165.00	153.50	140.25	123.80	99.00	165.00	522	238	219	225	16.50	2900	3.50	45.74	T8
PPI2-180	180.00	167.40	153.00	135.05	108.00	180.00	522	238	219	225	18.00	3400	3.50	58.40	T8
PPI2-200	200.00	186.00	170.00	150.00	120.00	200.00	522	238	219	225	20.00	3685	3.00	61.34	T8
PPI2-220	220.00	204.60	187.00	165.00	132.00	220.00	522	238	219	225	22.00	3800	3.00	64.70	T8
PPI2-240	240.00	223.20	204.00	180.00	144.00	240.00	522	238	219	225	24.00	3987	3.00	68.32	T8

*Specifications are under continuous improvement. Subject to change without notice.

	<ul style="list-style-type: none"> • JISC8702-Part1&2:2009 • IS15549:2005
---	---

Version 1.1 Sep 2021



Address: Pecon Distributor S Pvt Ltd Survey No. 373/01, gram Rajoda Tehsil Sanwer, Near Rama Phosphorate Indore, Madhya Pradesh

Telephone: +91 8815546646 Email: Peconpower56@gmail.com

Relicell Service Centres in India

Agra ■ Ahmedabad ■ Amritsar ■ Aurangabad ■ Bangalore ■ Bhopal ■ Bhubaneswar ■ Chandigarh ■ Chennai ■ Cochin ■ Coimbatore ■ Dehradun ■ Delhi ■ Ghaziabad ■ Goa ■ Gurgaon ■ Guwahati ■ Hubli ■ Hyderabad ■ Indore ■ Jabalpur ■ Jaipur ■ Kanpur ■ Kolkata ■ Kottayam ■ Kozhikode ■ Lucknow ■ Ludhiana ■ Madurai ■ Mangalore ■ Mumbai ■ Nagpur ■ Nashik ■ Patna ■ Pondicherry ■ Pune ■ Raipur ■ Rajkot ■ Ranchi ■ Siliguri ■ Surat ■ Trivandrum ■ Vadodara ■ Varanasi ■ Vasai ■ Vashi ■ Vijaywada ■ Vizag